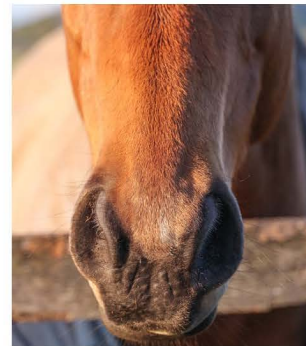


THE CHARACTERISTICS AND FEATURES OF THOROUGHBRED HORSES

Large eyes positioned on the sides of the head allow them to see almost all the way around their bodies.



Ears that can turn in different directions to detect noises from all around them and show their mood.



Large nostrils help them to breathe lots of air into their lungs quickly.



Long, thin legs allow them to take big steps when walking, trotting, cantering, and galloping.



Large muscles at the tops of their legs help them to speed up quickly and keep a fast pace as they race.



The hooves of thoroughbreds are hard and strong, for protection when moving.

Scan the QR code to access curriculum aligned **Thoroughbred Horses fact sheets**.
Australian Curriculum content: AC9SFU01, AC9S3U01